

9.4.1 TECHNICAL DATA

INTERNAL DIAMETER: 30 mm

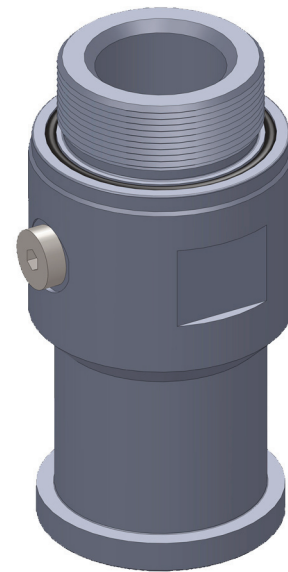
MAX OPERATING PRESSURE (PS): 400 BAR

WORKING TEMPERATURE):

- 20 ÷ 80 °C ("P" version with NBR seals)
- 10 ÷ 150 °C ("V" version with VITON seals)

MATERIAL: phosphated or galvanized carbon steel in compliance with Directive 2002/95/EC (RoHS) to resist to corrosion
 - stainless steel

WEIGHT: see Table 9.4d



9.4a

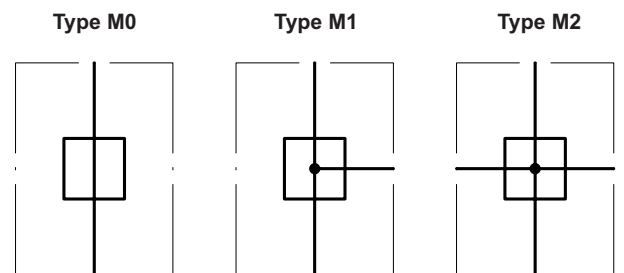
9.4.2 ADVANTAGES

- compact design
- flexible connection options

9.4.3 DESCRIPTION

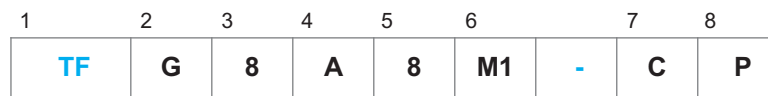
The gas side adapters are blocks of various type, which can be mounted on the fluid side of an accumulator and which can fit the safety block. Special seal allows this adapter to be installed simply and securely in any position on all fluid valves of the bladder or piston accumulators. It's important to select the correct adapter based on the correct thread fluid valve and the connection of installation side.

9.4.4 HYDRAULIC SYMBOL



9.4b

9.4.5 ORDER CODE



1	Series	
	Gas side adapter	= TF

2	Up connection	
	Thread BSP 150228 male	= G
	Adapter SAE 3000	= L
	Adapter SAE 6000	= H

3	Dimension of up connection	
	1 1/2" = 8	
	2" = 9	

4	Bottom connection	
	Thread BSP ISO 228 with chamfer for OR	= A
	Adapter SAE 3000 without OR	= L
	Adapter SAE 6000 without OR	= H

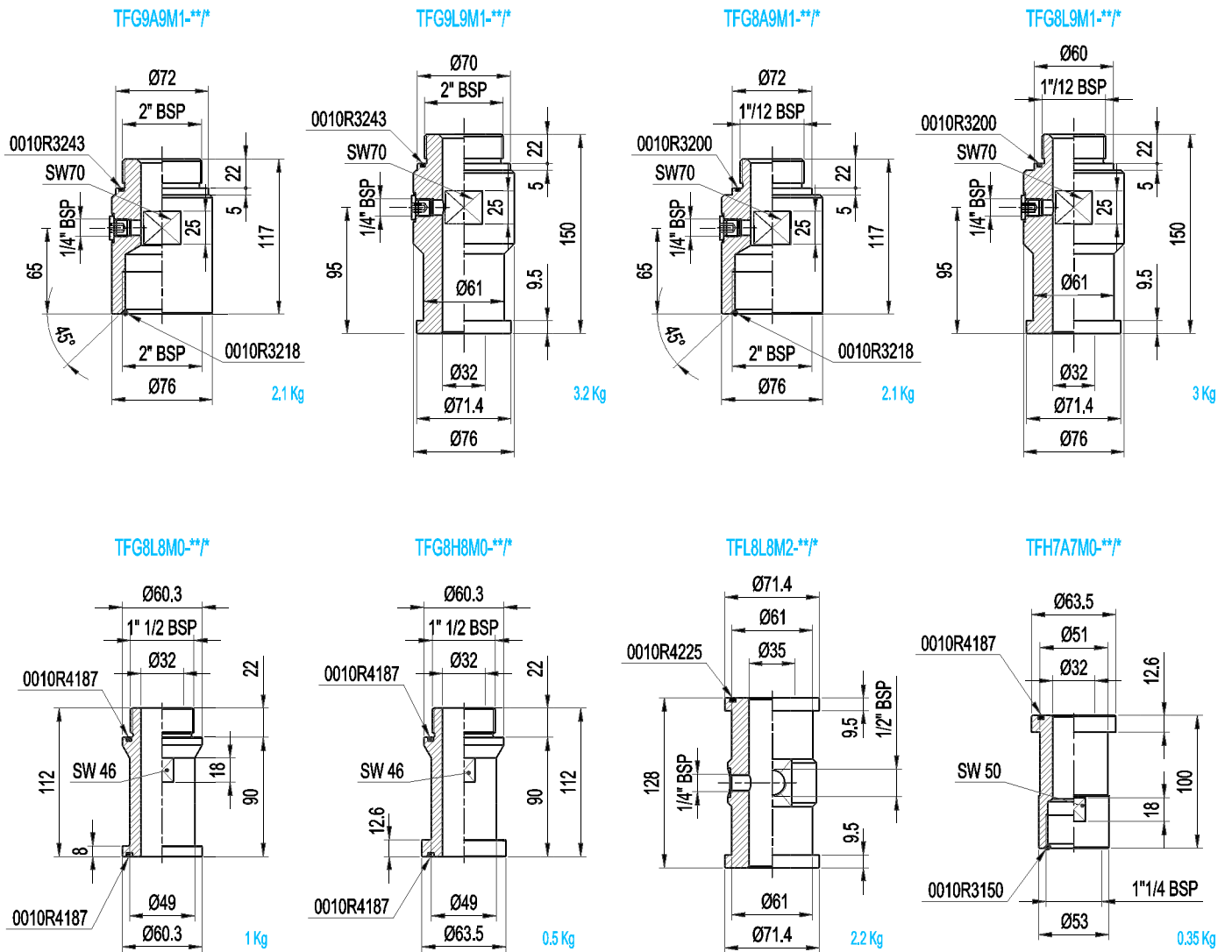
8	Seal material	
	Nitrile (NBR)	= C
	Viton (FKM)	= V

7	Block material	
	Carbon steel	= C
	Nickel coating 25 μ.	= N
	Nickel coating 40 μ	= M
	Stainless steel	= X

6	Lateral connection	
	Without connection 1/4"	= M0
	1 connection 1/4" BSP plugged	= M1
	2 connections 1/4" BSP plugged	= M2

5	Dimension of bottom connection	
	1 1/2" = 8	
	2" = 9	

9.4.6 DIMENSIONS



9.4c

Reproduction is forbidden.
 In the spirit of continuous improvement, our products may be changed.